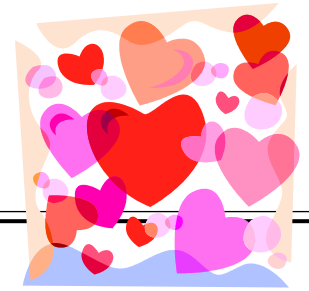


# Arlee Schools Newsletter

February 2012



## Of Community Interest—

**School Board Vacancy:** Arlee Jt. School Dist. #8 will have one (1) vacant seat for a three (3) year term and one (1) vacant seat for a one (1) year term on the Board of Trustees in May 2012. Nomination Petition and Oath of Candidacy must be filed with the election administrator by March 29, 2012. Please contact Lonnie Morin, District Clerk, at 726-3216 ext. 4, to request paperwork or come to the administration office Monday through Thursday between 8:00am and 5:00pm.

**Cookie-Gram Time:** Cookie Grams are now on sale! January 30<sup>th</sup> - February 8<sup>th</sup> for \$2.50. Make sure to pick up an order form in any of the school offices ASAP! The forms need to be returned to either Ms. Mize or Ms. Auer in the High School.

**Learn About Another Culture:** in-depth when you host a student from **Japan** this summer. Delegates are here for one month to experience what it is like to live with a typical American family. Program dates are **July 22—August 18** and delegates range in age from 12-16. To apply to host or for more information, contact Stephanie Davison (406-994-3502) or Beth Foster (406-461-3014) or go to [www.montana4h.org](http://www.montana4h.org) and look for international programs. Families with children who are within two years of age and the same gender as their delegate are encouraged to apply.

**Arlee Little Guy Wrestling:** The Arlee Wrestling Club will host a Little Guy sign up on February 8<sup>th</sup>, 2012 from 4 – 6:00 pm in the Junior High Science Room.

**Attention Seniors & Parents:** Senior Pictures and Baby Pictures are due no later than February 28<sup>th</sup>. Make sure to get them into Ms. Mize ASAP!

Friends of Arlee School, Inc. - established in 1992 to benefit  
the children of Arlee, Montana

## BUTTERCUP RUN 2012

1M fun run - 5K-10K walk/run  
March 31<sup>st</sup> in front of the Arlee HS

No Dogs, please



Schedule:  
Late registration/pick-up...10:00  
10K walk.....10:30  
1M, 5K, 10K.....11:00

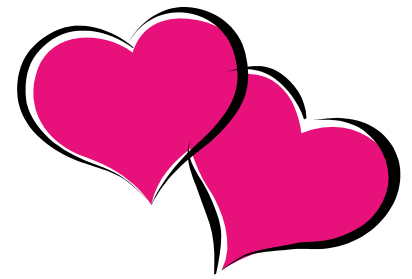
There will be early shirt, etc. pick-up from 5 - 6 PM on Friday, March 30 at the Arlee Schools cafeteria (back entrance of Gym Bldg). You can avoid the lines on race day by pre-registering and then picking up your items at that time.

**Come  
Here the  
Pep**



**Band:** The 5th & 6th grade Pep Band will be playing for our enjoyment during the Boys Basketball Game against Charlo, February 10th. Let's support our younger Pep Band!

# High School News—



**Upcoming Fundraisers:** **Donovan McDonald**, Arlee High School Sophomore, is trying to raise money to participate in the Down Under Cross Country race in Australia this summer. There are two fundraisers coming up. The first is a **Sweetheart Dance** at the Mission Community Center for Jr. High and High School students on February 11 from 8 - 11pm. Cost is \$3. There will be concessions available, also X Box and Wii stations for tournaments. Donovan will be available for a "meet & greet" from 8-9pm. The second fundraiser is a **Spaghetti Feed and a Live & Silent Auction** on March 10 also at the Mission Community Center from 4 - 7pm. Cost for the meal is \$5 per person or \$20 per family.

**Tournament Time Is Fast Approaching:** It's almost tournament time, so my report is being written to give you information on all of the upcoming wrestling and basketball tournaments. But, before the tournament information, I want to stress that sportsmanship is very important at the events and the Montana High School Association governs all of these tournaments. Some major rules to remember while attending Montana High School Association activities are as follows: **1. The use of bells, horns, wooden blocks and other noise makers during indoor Association contests is prohibited. 2. The formation of "rally lines" by spectators, fans and/or students on or near the playing floor during the introduction of players or at any other time before, during or after a game is prohibited. 3. Anyone associated with an Association contest is prohibited from throwing any type of object into or from any spectator section.** With these reminders, listed below are the tournament dates, times and costs:

**February 4 - Divisional Wrestling at Granite HS in Philipsburg - Wrestling starts at 9am - Cost: All day pass: Students \$6, Adults \$8.**

**February 10-11 - State Wrestling at Metra in Billings - Single session tickets are: Students \$12, Adults \$14.  
All-Session pass: Students \$18, Adults \$23.**

**February 16-18 - District 14C Boys & Girls Basketball Tournament at Ronan - Cost: Students \$6 per day, Adults \$7 per day.  
All-tournament passes: \$17 for all.**

**February 22-25 - Western "C" Divisional for Boys & Girls at MAC Center in Butte. Cost: Students \$7 each session, Adults \$9 each session. All-tournament passes may also be purchased.**

**March 1-3 - State "C" Boys Basketball Tournament at the Metra in Billings.**

**March 8-10 - State "C" Girls Basketball Tournament in Great Falls.**

Enjoy the tournaments and good luck to our Scarlets and Warriors. - Jim Taylor, HS Principal/Athletic Director



**Elementary News—** The Friday Free Three Program will be holding 2 events this month. On the 10th we will be celebrating Valentine's Day by playing in homemade "play dough". The 24th is a special event. We hope to be taking a field trip to the Arlee Senior Citizen's Center for a community service project. We will be visiting and serving our local seniors that day. Parents are welcome to join us. As always we have great fun and hope that you will come out to see what we are all about. See you on Fridays.

**Kind News Magazine News:** As you may have heard a cute gray mutt comes to Arlee elementary classrooms. That's Kipper, an assisted activities dog that visits

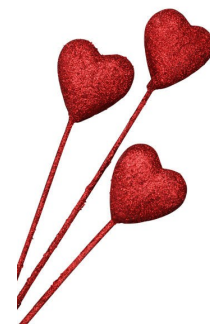
K-5th grades twice a month with KaDe. They see 6th graders less often, but the discussion and question sessions go longer. The 4th and 5th graders enjoy favorite animal discussions, teaching Kipper tricks and learning about pet care. The 3rd graders are just about to finish a booklet about dog safety, how to care for dogs and have fun with them. Some second graders are enjoying brief visits about pet care and introduction to many wild animals. The 1st graders and kindergartners all added to the mural on the wall about **Animals in Winter**. Some kindergartners made brown rabbits white for camouflage, while others cut out squirrels and made nests for winter warmth. Mrs. Barger's class made paper stones to build a cave for a

hibernating bear. The geese flying south were cut and colored by Mrs. Couture's class. Kipper did not help much with the mural work, but the children enjoyed seeing her as much as she enjoys coming to school. Our **Kind News Magazines** will be here very soon and start coming home after being discussed during a class visit from KaDe and Kipper. Do share and re-read these magazines with your children. You'll have fun and learn together.

-by  
KaDe  
Decker



# Hello from the Junior High



The junior high staff hopes everyone had great start for the new year. Now that we are on the downhill toward spring, here are some reminders of a few things that will be happening.

End of Year Testing! Reminder to all parents of 8th grade students, starting in May there will be testing in all core classes. There is no school on Monday, February 20th, for President Day. District Spelling Bee on March 1st at 10:30, County Bee in Ronan at 6:30pm on March 6th. Students will have their C.R.T. testing the week of March 5th and a good breakfast always helps. Earned Activity Field ski trip for second quarter is tentatively scheduled for March 14 and updated information will be sent home later. Junior High track practice starts March 19th at 4 and the JH Awards Banquet/Gallery Walk is also the 19th at 7:00pm. The annual Yellowstone Trip is on 5/21-5/26. Parent Teacher Conferences are on April 4th from 4pm-7pm. No appointment necessary for Junior High just come on in. Quarter 3 midterm is on March 1st and end of quarter is on March 29th. Here is a list of our great students on their earned incentives during quarter 2. These incentives need to be taken during quarter 3 between February 2nd and March 22nd. Eligibility rules apply.

**PERFECT ATTENDANCE:** Leeaisha Bunce, Isaac Desjarlais, Mattie Dunlop, Bryndle Goyins, TJ Knoll, Taylor Lammerding, Tara Messner, Naomi Plant, Ben Repnak, Justin Sansavere, Tyler Tanner, Haley Wilson, Abbi Yocum.

**Earned Activity:** Darby Belcourt, Alex Bertollt, Patrick BigSam, Ivory Brien, Leeaisha Bunce, Isaac Desjarlais, Mattie Dunlop, Bryndle Goyins, Calvin Hendren, Carly Hergett, Jon Keltner, TJ Knoll, Taylor Lammerding, Ella Lindberg, Morgan Malatare, Tara Messner, Stsa Pete, Naomi Plant, Megan Reed, Ben Repnak, savannah Romas, Suvi Rova, Cassidy Rubel, Kaylee Samsel, Justin Sansavere, Megan Shick, Raistlin Staber, Tyler Tanner, Michael Walker, Haley Wilson, Abbi Yocum, Harold Yocum.

**No Tardy Pass:** Tyler Adams, Piper Clinkenbeard, Julian Cutfinger, Isaac Desjarlais, Jasmine Dobson, Carly Hergett, Jon Keltner, TJ Knoll, Tara Messner, Shaylee Perry, Naomi Watts, Megan Reed, Ben Repnak, Cassidy Rubel, Kaylee Samsel, Megan Shick, Chase Wiley, Haley Wilson, Abbi Yocum, Harold Yocum.

**Honor Roll Pass:** Alex Bertollt, Melody Burnett, Piper Clinkenbeard, Isaac Desjarlais, Mattie Dunlop, Bryndle Goyins, Carly Hergett, TJ Knoll, Taylor Lammerding, Ella Lindbergh, Morgan Malatare, Tara Messner, Shaylee Perry, Stsa Pete, Naomi Plant, Megan Reed, Cassidy Rubel, Megan Shick, Tyler Tanner, Daniel Vollin, Chase Wiley, Haley Wilson, Abbi Yocum, Harold Yocum.





## Future Dates of Interest

February 3 & 4 - AHS Wrestling Divisional

February 9 - Arlee's 8th Annual Chocolate Lover's Festival at Brown Bldg. - 6:30pm

February 10 & 11 - AHS Wrestling State

February 10 - Friday Free Three Event

February 10 - 5th & 6th Grade Band Pep Band Night at the Boys Charlo BB Game

February 14 - School Board Meeting at 6:30pm

February 16-18 - AHS Basketball District

February 20 - NO SCHOOL - President's Day

February 21 - Community Family Night - 5pm to 7pm

February 22 - IEC Meeting

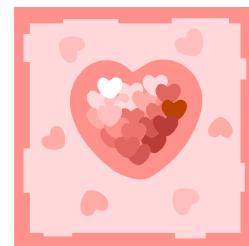
February 22-24 - Girls & Boys AHS Basketball Divisional

February 24 - Friday Free Three Event

March 1 - Arlee District Spelling Bee 5th-8th Graders AJHS gymnasium at 10:30am.

March 6 - Lake County Spelling Bee - Ronan Middle School Performing Arts Center at 6:30pm.

March 19 - Arlee Junior High Awards Banquet/Student Work Gallery - AJHS gymnasium at 7:00pm.



# February 2012

## Lunch Menu

Sun	Mon	Tue	Wed	Thu	Fri	Sat
			1 Pancakes & Sausage  Sloppy Joes, Salad, & Fruit Cocktail	2 Cinnamon Roll  Ham & Bean Soup, Corn- bread, Applesauce, & Chees stick	3	4
5	6 Oatmeal & Toast  Chicken Fettuccini, Peas, Fruit Cocktail, & Roll	7 Cold Cereal  Chicken Cordon Bleu Sandwich, Oven Fries, & Pears	8 Pancakes & Sausage  Spaghetti, Corn, Peaches, & Bread Stick	9 Cinnamon Roll  Goulash, Corn, & Apricots	10	11
12	13 Cream of Wheat & Toast  Tater Tot Casserole, Green Beans, & Pears	14 Cinnamon Breakfast Pizza  Lasagna, Salad, Strawber- ry Shortcake, & Bread Stick	15 Pancakes & Sausage  Pulled Chicken Sandwich, Cole Slaw, & Apricots	16 Cinnamon Roll  Chicken Noodle Soup, Applesauce, & Cornbread	17	18
19	20  <b><i>No School</i></b>	21 Cold Cereal  Hamburger Gravy, Mashed Potatoes, Green Beans, Peaches, & Roll	22 Pancakes & Sausage  Hamburger, Lettuce, To- mato, Pickle, Baked Beans, & Pineapple	23 Cinnamon Roll  Chicken a la King, Brown Rice, Broccoli Normandy, & Roll	24	25
26	27 Oatmeal & Toast  Scallop Potatoes, Green Beans, Peaches, & Roll	28 Scrambled Eggs  Chicken Nuggets, Potato Smiles, Salad, & Fruit Cocktail	29 Pancakes & Sausage  Baked Potato Bar, Brocco- li Normandy, Pineapple, & Roll			

Lunch menu may change due to availability.



## Arlee Community Development Corporation

P.O. Box 452 ♦ Arlee, MT 59821 ♦ (406) 726-5550 phone/fax  
arleecdc@arleemontana.org ♦ www.arleemontana.org

Do I Smell Love In The Air?

February 2012

Or is that **chocolate**? I do believe it is both. After all it is February and we all know what that means! Yes the **8<sup>th</sup> Annual Arlee CDC's Chocolate Lovers Festival!** Thursday, February 9, 2012 is a night of fun, yummy chocolate treats and fundraising. The Chocolate Lovers Festival is the CDC's biggest fundraising event and we need your support. The money that is raised by your bidding on your favorite chocolate treat helps provide money to support the **Imagination Library Program**, which sends a book every month to a child 5 years old and younger. The money also supports **The Jocko Valley Library's Summer Reading Program** and other **CDC youth programs**. Once again this year, auctioneer **JR Strand** of **Strand Auction Sales of Missoula** will donate his time and talents. **JR** makes the auction fun and lively. He also opens the bidding floor now and again throughout the evening just for the wee folk, with a "kids only" auction.

We will be holding this love-filled-delicious event in the center of Arlee at the **Arlee Brown Building Community Center**, located across the highway from the Arlee Post Office. Tasting begins at **6:30pm** and the auction at **7:30pm**. You've never been to the Arlee CDC's Chocolate Lovers Festival? You've never been to an auction? Weeell, let me tell you alllll about it. Following is a menu of what to do:

**#1 – Mark February 9 on your calendar.**

**#2 – Choose your most favorite Chocolate recipe (or try a new one!)**

**#3 – Make 2 of that chosen recipe (1 for tasting & 1 for auction!)**

**#4 – Bring both your items to the Arlee Brown Building between 1:00pm & 6:00pm on Feb. 9**

***(We strongly encourage you to bring your entry early. It helps us process the items & saves congestion at the door that night.)***

**#5 – Come back to the Festival with all your friends and family and BID on your favorite item.**

***(We need bidders – this is how we make the money – Please come and bid on the chocolate goodies!)***

**#6 – Have fun! Help raise money! Maybe win a PRIZE for your entry.**

**#7 – One last thing you can do for us – TELL YOUR FRIENDS ABOUT THE FESTIVAL. PUT IT ON YOUR FACEBOOK WALL. "LIKE" THE ARLEE CDC ON FACEBOOK. CHECK OUT THE FESTIVAL POST ON THE CDC PAGE. PASS THE WORD! If you or your friends don't have Facebook – check out the CDC information on the Arlee website at: [www.arleemontana.org](http://www.arleemontana.org) then click on Arlee CDC**

For more information you can also contact Kelley Brown at the CDC office or via email as listed above on this letter. I hope that **all of Arlee will come to the Chocolate Lovers Festival**. Let's show some love and smell the chocolate!! Hope to see you there!!

Being a member of something has long been an American tradition. We are members of families; teams; clubs; unions; communities and much more. We need you to be a member of the Arlee CDC as well. Your membership does so many things, not only for the CDC but for the Arlee community and for you. Your membership gives the CDC important numbers and your membership fee helps the CDC supplement income for operating expenses. Your membership shows current and future donors the Arlee CDC is viable and working. Your membership gives you a voice. Your membership could help build future income opportunities for Arlee. Your membership builds trails. Your membership gives kids a place for self-expression and opportunities to build reading skills. Your membership beautifies our community. Your membership brings cultures together. Your membership gives us a place to express our talents through art and culture. As you can see your membership is very important! If you are a member of the Arlee CDC and need to renew your membership – we encourage you to do so at the Chocolate Lovers Festival. If you are not yet a member of the Arlee CDC we highly encourage you to sign up at the Chocolate Lovers Festival. Dues are \$10 per person per year. **You can sign up and renew at the Arlee CDC information table at the Festival** or contact Kelley at the CDC office for a form. Please remember membership doesn't automatically commit you to committee work or meetings. What it does is indicate your support and help the CDC to bring various kinds of resources into our community. Only you can take the steps to be as committed as you want to be!

The next CDC meeting, will be held on February 21<sup>st</sup> at 6pm in the Arlee High School Business Lab. Join us!

Complete minutes of our meetings are available at [www.arleemontana.org](http://www.arleemontana.org). Look for Arlee CDC on the side of the screen, and click on **Meeting Minutes**.  
**Kimberly Folden – Board President**

### MISSION STATEMENT

The Arlee Community Development Corporation will assist and foster the planning and development of projects deemed to be beneficial socially, physically, economically and culturally to the public interest of the Arlee-Jocko Valley community.

!!  
E  
V  
E  
R  
Y  
B  
I  
D  
H  
O  
P  
E  
S  
A  
K  
I  
D  
!!



## JOCKO VALLEY LIBRARY

PO Box 158 Arlee, MT 59821

[jvlibrary@blackfoot.net](mailto:jvlibrary@blackfoot.net)

406-726-3572

### 8<sup>th</sup> Annual Chocolate Lover's Festival

Please join us at the Brown Building for the Chocolate Lover's Festival on Thursday, February 9<sup>th</sup> at 6:30. The auction begins at 7:30 with J.R. Strand of Strand Auction Sales in Missoula. The public is invited to taste and vote on their favorite entries in several categories. For just \$2 per person and \$5 per family with children, you will help support the Arlee Community Development's Youth Programs and the Jocko Valley Library. We hope you attend the event and bid on a treat.

***Remember: "Every bid helps a kid."***

The Jocko Valley Library would like to thank the community members who submitted photos for our new banner. We will review all of the photos at our next board meeting on Thursday, February 16<sup>th</sup> at 5:00. Our board meetings are open to the public, so we hope to see you there.

### New Books:

We are constantly purchasing new books for the library. Our most recent purchase includes 20 new books in addition to the "Best Sellers" we receive each month. Please stop by to see the additions to our collection. We also have a new bulletin board that lists all of our new books, along with library events each month.

### Internet and WiFi:

Do you need to use the internet? The Jocko Valley Library has five internet computers ready to help with any task. In addition, we have **WiFi** available if you would like to bring your own laptop. Enjoy our comfortable seating and quiet environment while you surf the web on your personal computer.

### February Events:

~Wednesday, February 1st- WOW Bus Visit from 1:00-4:00

***Class: Email***

~Wednesday, February 15th-WOW Bus Visit from 1:00-4:00

***Class: E-File Taxes***

~Thursday, February 9th- Chocolate Lover's Festival 6:00 at the Brown Building

~Friday, February 10th- Juliann's Read Aloud and Green Craft Project 12:30

~Friday, February 24th- Juliann's Read Aloud and Green Craft Project 12:30

Library Hours: Tuesday-Thursday: 1:00-5:00 & Friday: 12:00-4:00



**SUMMER WORKSHOPS FILL QUICKLY!**

**CALL SOON: (406) 444-4432**

For more information and online registration:

[www.MontanaDRIVE.mt.gov](http://www.MontanaDRIVE.mt.gov)



## 2012 One-Day Workshops

8:00 a.m. to 6:00 p.m. during June, July and August  
12 drivers each day –Registration fee \$299 each

Call (406) 444-4432 or E-mail [MontanaDRIVE@mt.gov](mailto:MontanaDRIVE@mt.gov)  
to schedule your workshop date.

Bring a lunch and make lodging arrangements in  
Lewistown, Montana

## TEEN One-Day DR.I.V.E. Workshops

July 16, 17 or 18 Only Registration Fee \$275

State Farm Teen Driver Scholarships are available.  
Teens learn and practice how to control a vehicle in critical driving  
situations and recover when a wheel drifts off road

Payment in full is required to confirm reservations.

Mail registration form with your check or purchase order to:

**OPI - Montana DRIVE**

PO Box 202501, Helena, MT 59620-2501

Telephone (406) 444-4432 to pay with Visa, MasterCard or Discover



### 2012 MONTANA DR.I.V.E. ONE-DAY WORKSHOP SCHEDULE ONLY 12 DRIVERS EACH DAY

Lewistown, MT - Summer Only		Monday	Tuesday	Wednesday	Thursday	Friday	Saturday
	June	11	12	13	14	15	
	June	18	19	20	21	22	23
	June	25	26	27	28	29	30
	July	9	10	11	12	13	
	July	Teen 16	Teen 17	Teen 18	19	20	
	July	23	24	25	26	27	28
	July/August	July 30	July 31	Aug 1	2	3	4
	August	6	7	8	9	10	

TO RESERVE SPACE IN THIS WORKSHOP, CALL (406) 444-4432 or REGISTER ONLINE AT [www.montanaDRIVE.mt.gov](http://www.montanaDRIVE.mt.gov)

We will need participant information, preferred dates, and employer data (if applicable).

If you register online, we will contact you within 1-2 weeks to finalize payment arrangements.

**Registration and Refund Policy:** Full Payment is required for reservation confirmation.  
Notify our office as soon as possible if you need to cancel or send a substitute. Refunds are  
available as follows:

90% Refund with 20 or more days advance notice;

50% Refund with 10-19 days advance notice;

Less than 10 days—No refund, but you can send a substitute with prior notice



Montana  
**Office of Public Instruction**  
Denise Juneau, State Superintendent

1/12/2012



# **State Farm™ Teen Driver** **2012 Scholarship Application**

Name: \_\_\_\_\_ Daytime Phone: \_\_\_\_\_

Address: \_\_\_\_\_ E-mail: \_\_\_\_\_

\_\_\_\_\_ School: \_\_\_\_\_

Preferred Workshop Date:      **Monday, July 16**      **Tuesday, July 17**      **Wednesday, July 18**  
*(If you can attend the workshop on any of these dates, please check all that apply. We will confirm with you before scheduling.)*

Applications for a **State Farm Insurance \$200 Scholarship** to the Teen Montana DR.I.V.E. Workshops in Lewistown must be received before **May 30**. Montana DR.I.V.E. Teen One-Day workshops are scheduled on **July 16, 17, and 18, 2012**. Teens will learn skills to handle critical and emergency driving situations which cause most types of crashes in Montana. **Teen Workshops cost \$275 and teens will be required to pay \$75 to confirm their Montana DR.I.V.E. Workshop reservation.** Successful applicants will be notified before June 1, 2012. Use this form to submit your application by fax or regular mail. (You can print this form, but it will not save in Adobe Reader). To e-mail the application, include the same information on this form in an e-mail to [MontanaDRIVE@mt.gov](mailto:MontanaDRIVE@mt.gov). To fax: (406) 444-2955. To mail: OPI-Montana DRIVE, PO Box 202501, Helena, MT 59620-2501.

**Why are you applying for a **State Farm Scholarship** to attend the Montana DR.I.V.E. Teen Workshop?**

*If you need more space, continue on a separate page*

**How did you hear about the Montana DR.I.V.E. Summer Workshops?**

Montana DR.I.V.E. [www.MontanaDRIVE.mt.gov](http://www.MontanaDRIVE.mt.gov)  
406.444.4432  
FAX 406.444.2955

 Distributed by:  
**Montana**  
**Office of Public Instruction**  
Denise Juneau, State Superintendent  
[opi.mt.gov](http://opi.mt.gov)